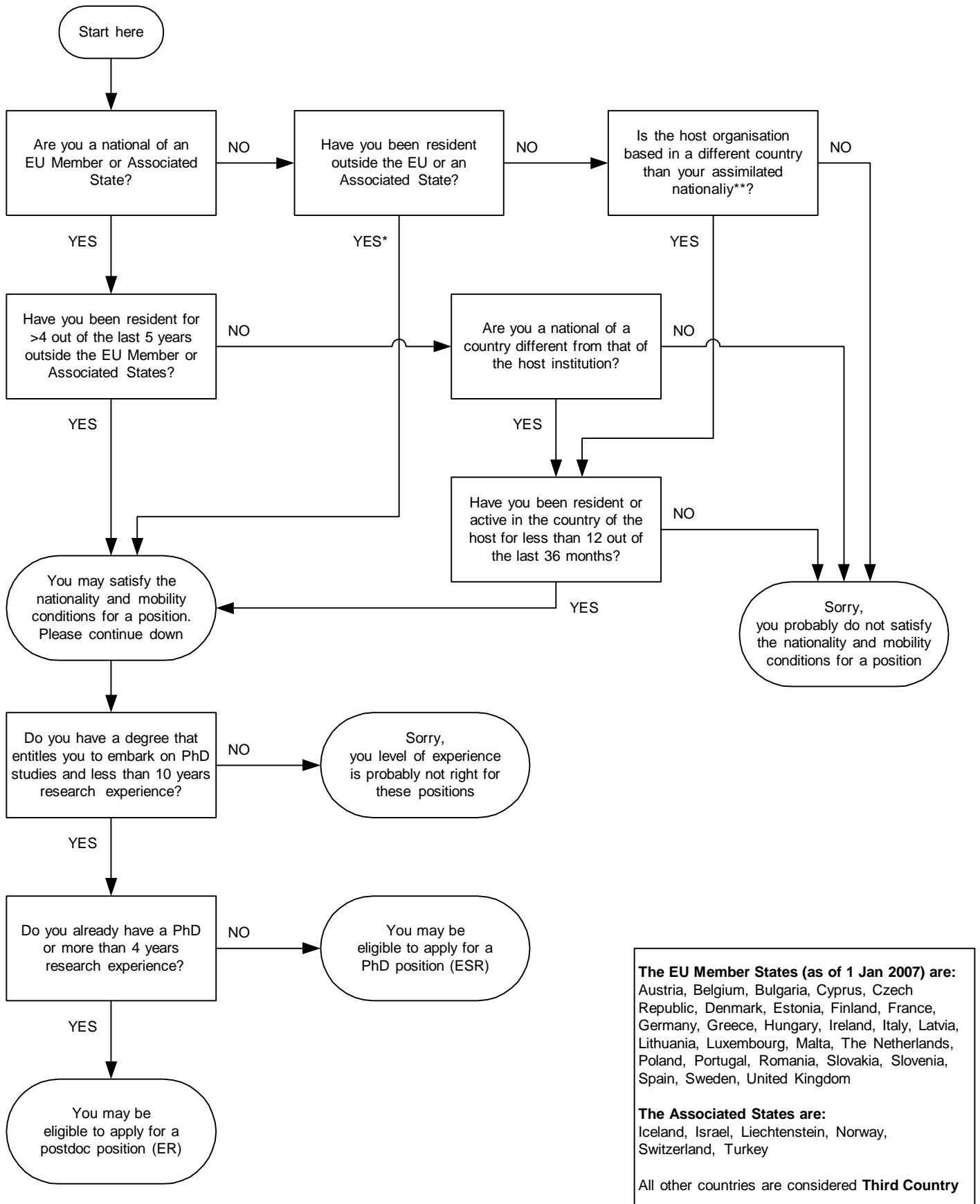


Flowchart to help you determine whether you might be eligible for one of the ELSA positions (adapted and simplified from the RTN Handbook).

(Note: this is an indicative diagram - refer to the official documentation for full conditions.)



* Within the 30% limit for the total number of person-months for Third Country researchers appointed by the Network

** If you have resided at least 4 out of the last 5 years in a Member/Associated State you are treated as a national of a Member/Associated State. The assimilated nationality refers to the nationality of the EU Member or Associated State in which you have resided the longest during the last 5 years.